

HiCover Series LED Floodlight



Optical Performance

Lumens: 6300lm-18900lm
CCT: 3500K, 4000K, 5000K
Fixture Efficacy: >105lm/W

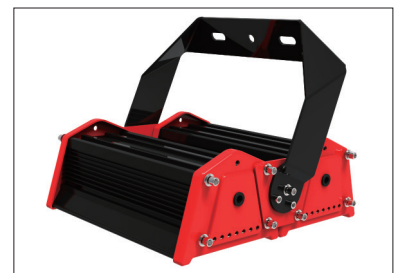
Electrical Specifications

Wattage: 60W-180W
Power Input: AC100-277V 47-63Hz
Power Factor: >0.93



Great Features

- Equivalent to 250W, 400W and 700W HID.
- Private tooling design.
- Original Nichia LED from Japan and Mean Well driver from Taiwan.
- LED efficacy > 140lm/W, system efficacy > 105lm/W.
- IP65 weatherproof.
- Dali control, Microwave motion sensor functions available.
- 5 year warranty.



Product Specification

LED Type: Nichia LED

CCT: 3500K, 4000K, 5000K

System Efficacy: >105lm/W

CRI: 73 standard (83 optional)

Beam Angle: 30°/80°, 60°/90°, 120°

IP Level: IP65

Model	Power	Luminous Flux @5000K CRI73	HID Replacement	Net Weight	Product Dimension
AGC-FL01-60	60W	>6600lm	150W	4.2kg	254x280x102mm
AGC-FL01-90	90W	>9450lm	250W	5.2kg	254x420x102mm
AGC-FL01-120	120W	>12600lm	250W-400W	6.8kg	486x280x102mm
AGC-FL01-180	180W	>18900lm	700W	9.8kg	486x420x102mm

Structure

