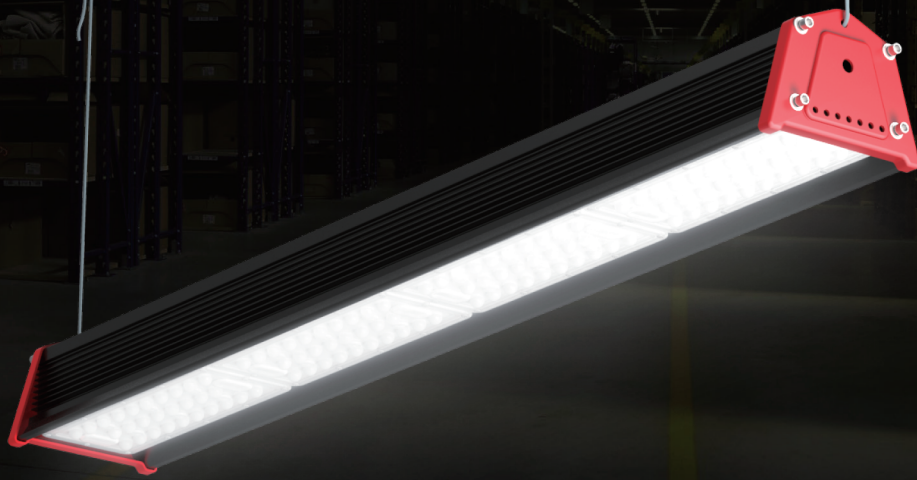


# Shooter Series LED Linear Bay



## Optical Performance

Lumens: 9450lm-18900lm  
CCT: 3500K, 4000K, 5000K  
Fixture Efficacy: >105lm/W

## Electrical Specifications

Wattage: 90W-180W  
Power Input: AC100-277V 47-63Hz  
Power Factor: >0.93



## Great Features

- Equivalent to 250W, 400W and 700W HID.
- Private tooling design.
- Original Nichia LED from Japan and Mean Well driver from Taiwan.
- LED efficacy > 140lm/W, system efficacy > 105lm/W.
- IP65 weatherproof.
- Multiple installations: Cable grippers hanging, Mobile ceiling mount, Fixed ceiling mount.
- Dali control, Microwave motion sensor functions available.
- 5 year warranty.



ADD: 2nd Building Dingfeng High-Tech Zone, Fuyuan 1st Road, Fuyong Sub-district, Bao'an District, Shenzhen, China.

Tel: +86-755-29197332

Fax: +86-755-29197301

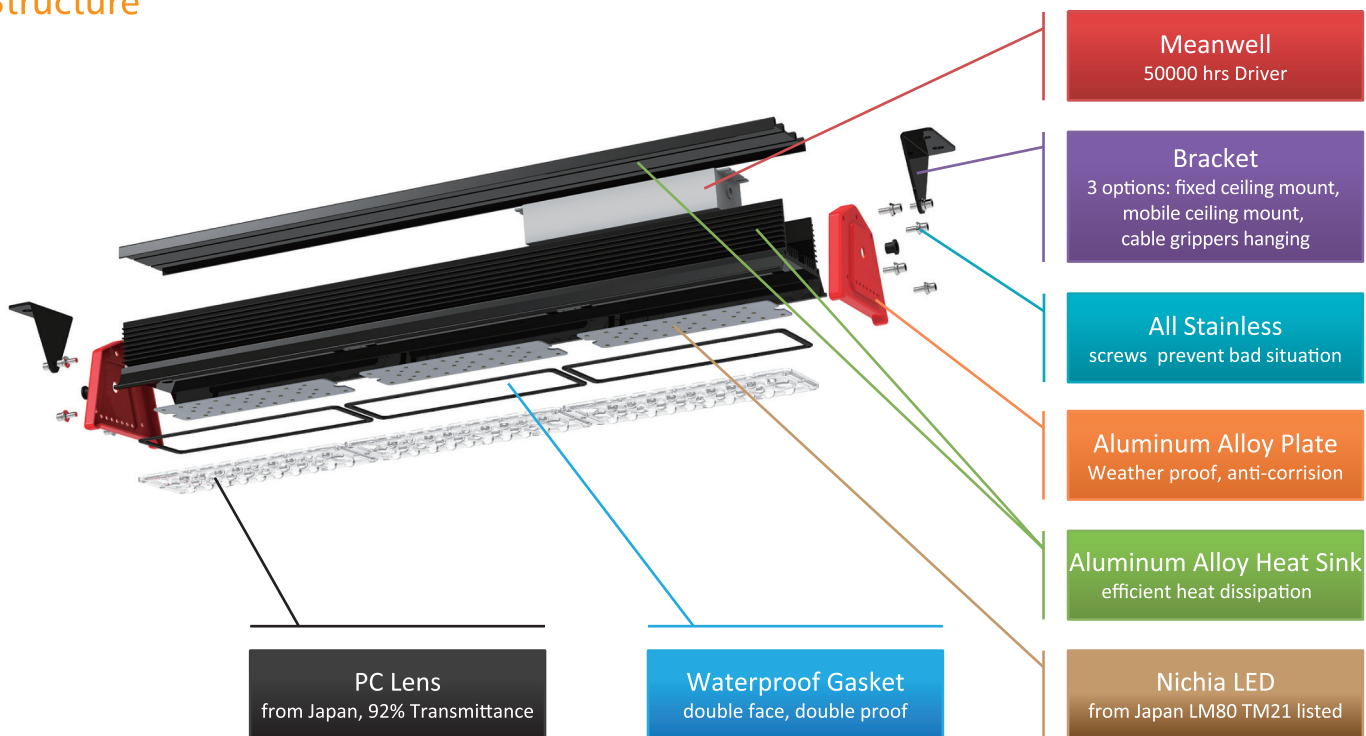
E-mail: info@agcled.com

## Product Specification

LED Type: Nichia LED  
 CCT: 3500K, 4000K, 5000K  
 System Efficacy: > 105lm/W  
 CRI: 73 standard (83 optional)  
 Beam Angle: 30°/80°, 60°/90°  
 IP Level: IP65

Model	Power	Luminous Flux @5000K CRI73	HID Replacement	Net Weight	Product Dimension
AGC-LHB01-90	90W	>9450lm	250W	4.8kg	718x137x102mm
AGC-LHB01-120	120W	>12600lm	250W-400W	6.0kg	948x137x102mm
AGC-LHB01-150	150W	>16500lm	400W-600W	7.2kg	1178x137x102mm
AGC-LHB01-180	180W	>18900lm	700W	9.2kg	718x257x102mm

## Structure



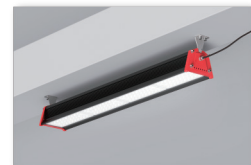
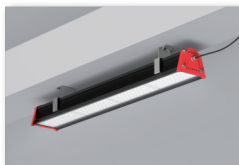
## Intelligent control options

Dali control  
 Microwave motion sensor



## Installation options

Cable grippers hanging  
 Mobile ceiling mount  
 Fixed ceiling mount



## Accessories

2meters cable grippers  
 Mobile ceiling mount bracket  
 Ceiling mount bracket

